

SILVIA SCHAEFFER

INTERIOR DESIGN



COMMERCIAL & RESIDENTIAL
sophistication for every space

about

Silvia Schaeffer hails from the vibrant city of São Paulo, Brazil, and has over two decades of architecture and interior design expertise. With a diverse portfolio across Brazil, Europe, and the United States, where she has made her home since 2016, Silvia leads a talented team in orchestrating bespoke interior design for residential and commercial clientele.

Silvia's journey includes an award-ed interior design studio celebrated for its innovative approach and dedication to excellence. To Silvia, interior design transcends mere aesthetics; it delves into the realm of the soul. It's an intricate dance of self-discovery, far beyond mere furnishing arrangements. Central to her approach is a profound understanding of her clients' quirks, passions, and lifestyles. This deep comprehension allows her to tailor design concepts meticulously, ensuring a seamless alignment with their tastes and requirements.

"I am deeply passionate about marrying exceptional design with functionality, infusing each creation with a dash of Brazilian essence," Silvia shares. For her, every project embodies a fusion of craftsmanship and creativity, resulting in a harmonious blend of quality and innovation.

Silvia's repertoire encompasses a spectrum of talents, ranging from Interior and Landscape Design to Lighting and Floor Plan expertise, all underpinned by her adept project management and staging skills. "From conceptualization to execution, I am fully immersed in the journey," she affirms. Rooted in tradition yet brimming with contemporary flair, her projects radiate a distinct artistic identity while seamlessly integrating practical solutions — with the client's vision as the guiding beacon.

At the core of Silvia's mission lies a commitment to fostering meaningful connections with her clients.



content

COMMERCIAL

06	Office Taylor Made Warehouse remodeled to industrial modern design.
08	Auburn Hills Office US office remodeled to collaborative modern design.
10	Eras Bookstore Reimagining an empty retail space into a community hub.
14	BASF Large exterior and interior corporate space.
20	Z Street Loft Colors and landscape design for brand new apartment building.
21	Boulder Ridge Exterior and interior design finish packages for new development.
22	Commercial Building Common spaces remodel in Portland Oregon building.
24	Brazilian Beauty New luxury spa interior design.
25	Woof Gang Interior space planning and design for franchised pet boutique.

26	Chazzano Coffee Roasters Light industrial roastery design.
29	Bar & Lounge Contemporary bar project.
32	Deli Design Modern lines and beautiful details to enhance client's rebrand.
30	BAUS Contemporary upgrades for two locations.
35	Beauty Studio Modern lines and beautiful details to enhance client's rebrand.

RESIDENTIAL

37	Hills House Modern style home while mixing materials.
38	DesRosier House An architectural masterpiece gets a modern refresh.
42	Park Hill House Remodeling a beloved home to contemporary standards.
44	Traverse City House A fresh take on bringing the outdoors into a modern aesthetic.

Lake View House Presenting elegance at it's best with amodern home interior.	46
Atlanta House Finding solutions for an above ground pool challenge.	52
Deer Spring House Modern vibrant redesign.	53
Carbonel Condo Contemporary Miami condo update.	54
2 Creeks Design Custom designed home, following a transitional design approach.	56
Photographer's Design New build with modern lines and clean design.	58
Boulevard House Efficient, modern and inviting kitchen.	60
Tree House Clean and elegant design using minimal color and displays.	61
Birmingham Design New apartment layout design.	62
Kids Playroom New furniture and materials with a modern and clean design.	63
White House Contemporary home remodeled with clean lines and open spaces.	64
Troy Design Modern bedrooms and functional fun for the whole family.	66

Portland Condo Urban chic with city views design.	72
Camas Design Personality and fun with modern farmhouse vibes.	74
Chase Design Functional elegance for social gatherings.	76
Springs Design Brazilian charm in modern extension.	80
Florida Design Modern kitchen and bathroom renovation.	84
Shenandoah Design Enhanced living spaces.	86
Mondrian Design Dynamic design in Mondrian neighborhood.	88
Jardins Design Multifunctional renovation in São Paulo.	92
Bella Colina Design Modern Brazilian aesthetic in Florida.	94

All Silvia's photographs —————
Photo: @emin_photo / Emin Kadi
Styling: @fabiolamasserant.ic / Fabiola Massserant
Hair: @alexemiliosalon / Alex & Emilio
Studio: @elmadhaus / Alyce Voit





Silvia has extensive experience with commercial projects (hotels, lounges, restaurants, retail spaces, offices, libraries, schools, country clubs, gyms, spas, and shopping malls), focusing on increasing functionality and elevating brand essence.

Experience in commercial interior design consists of: Layout and Floor plan; Furniture rearrangement / replacement; Color palette and finishing selection; Wall textures and materials; Kitchen design; Bathroom design; Lighting; and Landscaping.

OFFICE
TAYLOR MADE

COMMERCIAL design



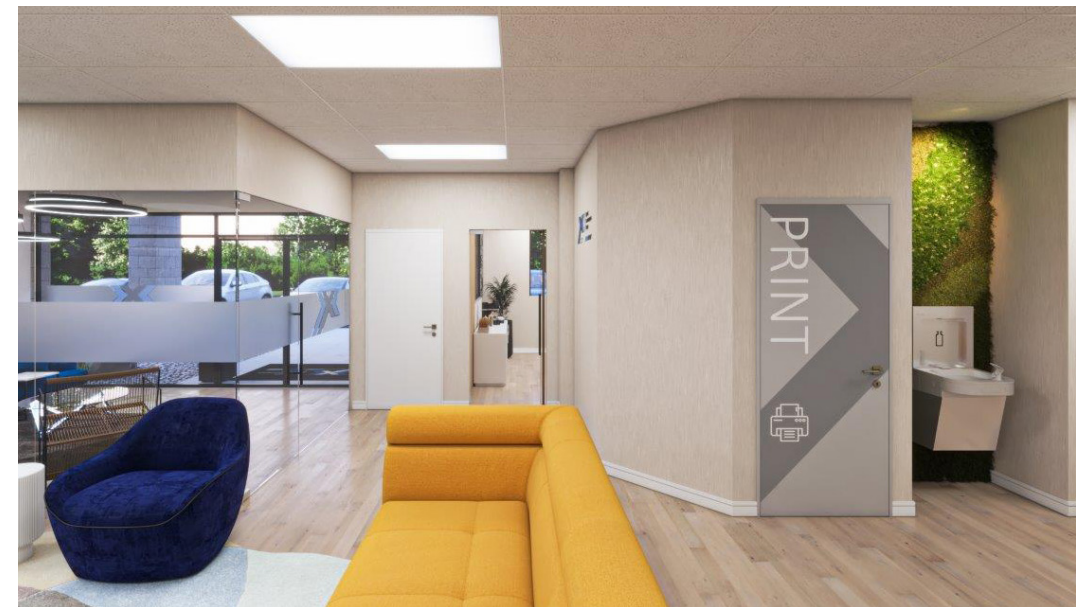
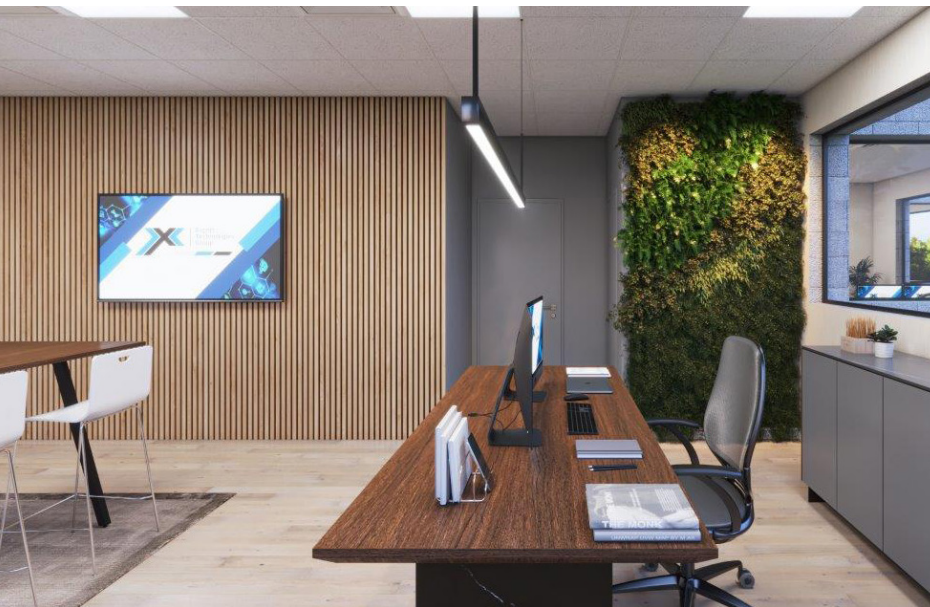
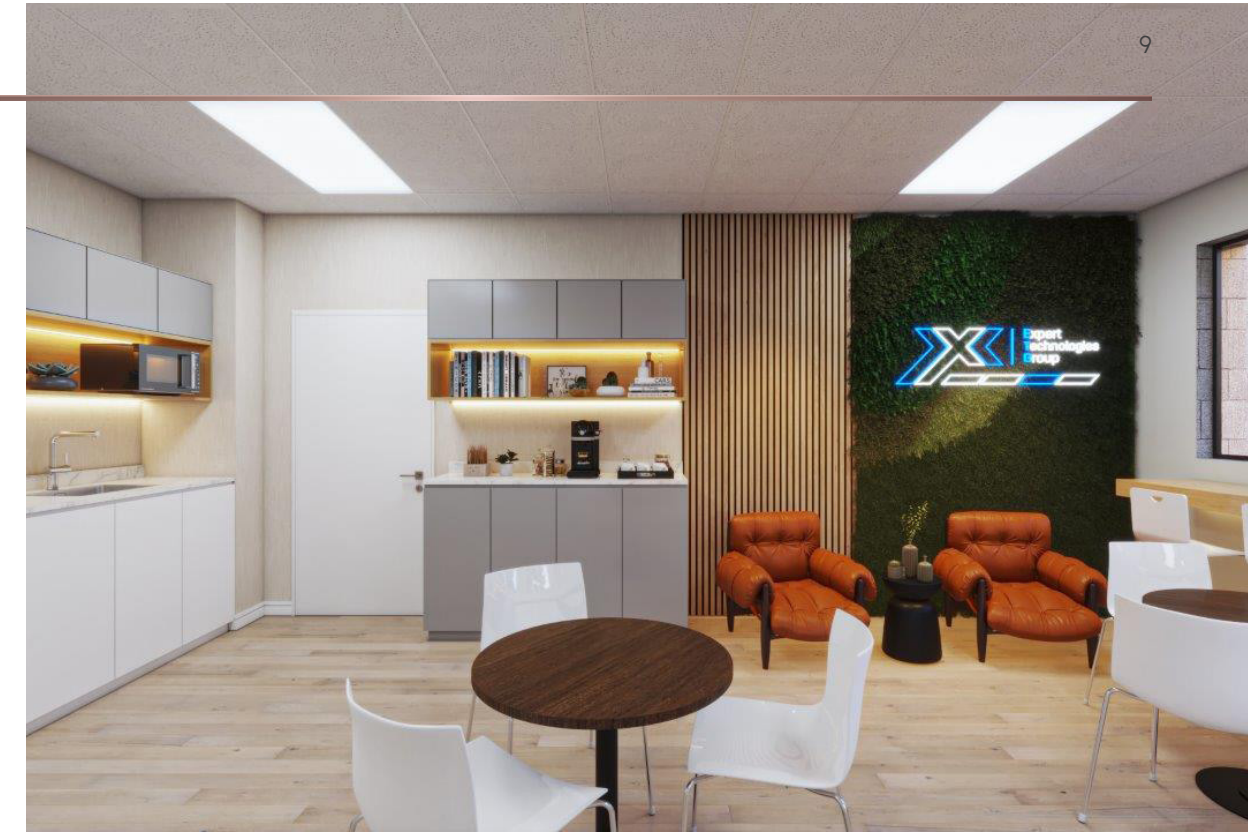
INDUSTRIAL MODERN

An old warehouse office completely remodeled to an industrial modern design concept.



AUBURN HILLS OFFICE DESIGN

The client aimed to create a fresh, open atmosphere for their US office to enhance interaction and connection among employees. Open working spaces and glass-enclosed offices were introduced, complemented by carefully selected materials and furniture reminiscent of their corporate office in London. Nature was integrated with green walls and plants, transforming the office into a stylish and comfortable space with modern aesthetics.



ERAS BOOKSTORE

The client discovered an empty commercial space in Michigan and envisioned transforming it into a bookstore with an attached coffee shop. Silvia brought this vision to life by crafting a cozy atmosphere with warm wood finishes and abundant greenery, effectively bringing the serenity of nature indoors. The resulting design not only invites people to browse and shop but also encourages them to linger, savoring coffee with friends. In response to the client's desire for larger group gatherings, book clubs, and movie nights, Silvia incorporated a spacious area equipped with a large screen, maintaining the theme of wood finishes and greenery to ensure a harmonious and calming ambiance.



▲ CONNECTED DESIGN

A feeling of cohesiveness between each area was achieved by repeating colors and textures throughout the different spaces.



► Particular care was taken to design clear pathways, easily reachable shelves, and adaptable product displays. A dedicated space was also set aside for film screenings and literary gatherings.



COMMERCIAL EXTERIOR BASF

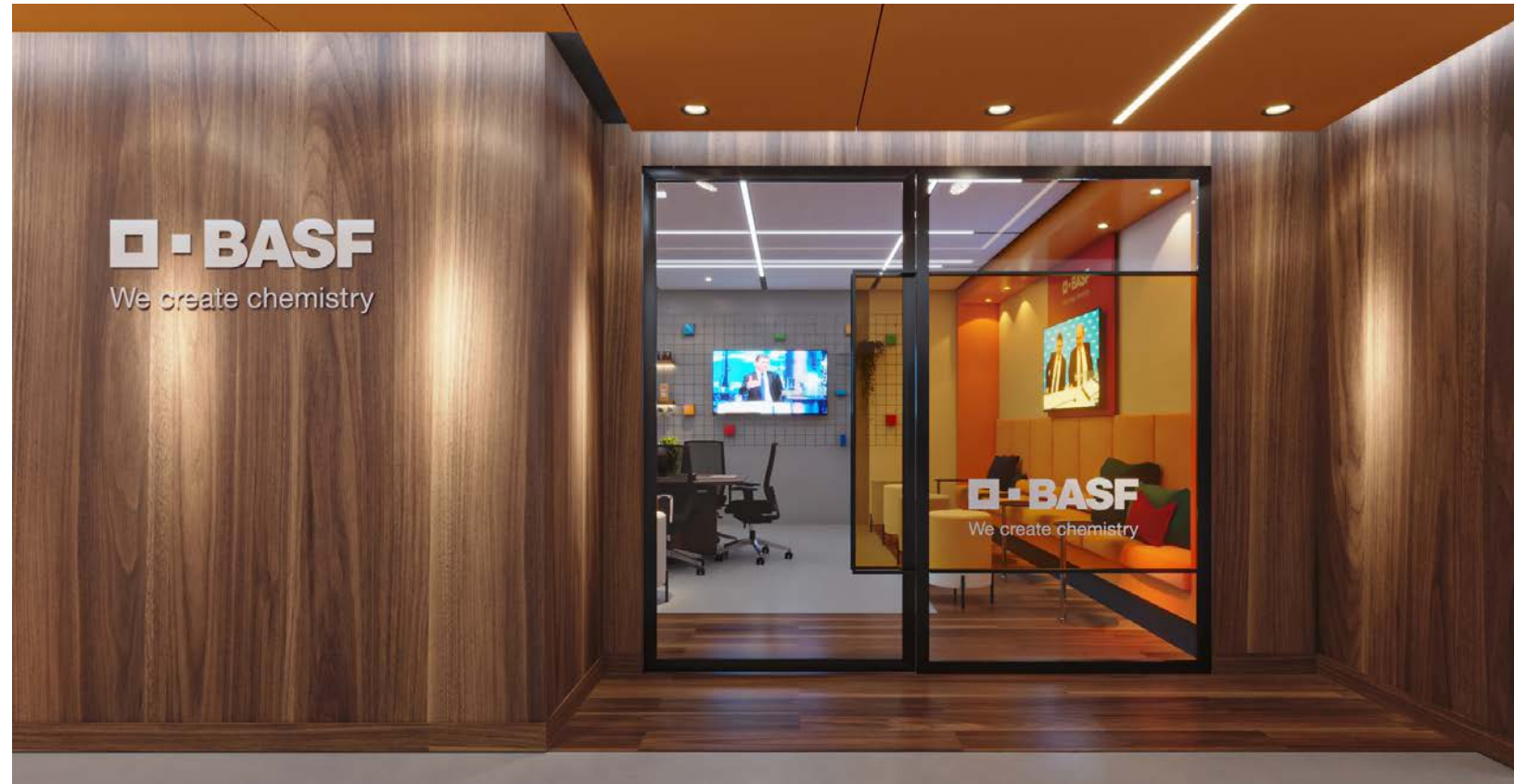
This international company, with offices in Michigan, enlisted Silvia to undertake a comprehensive renovation of both the building's exterior and interior, including the addition of a new gym facility for their employees. The goal was to align the spaces with the company's vivid brand identity. Silvia began by conducting thorough research into the company's brand, ensuring that the design would embody its vibrant essence. This meticulous approach resulted in a playful and colorful environment.

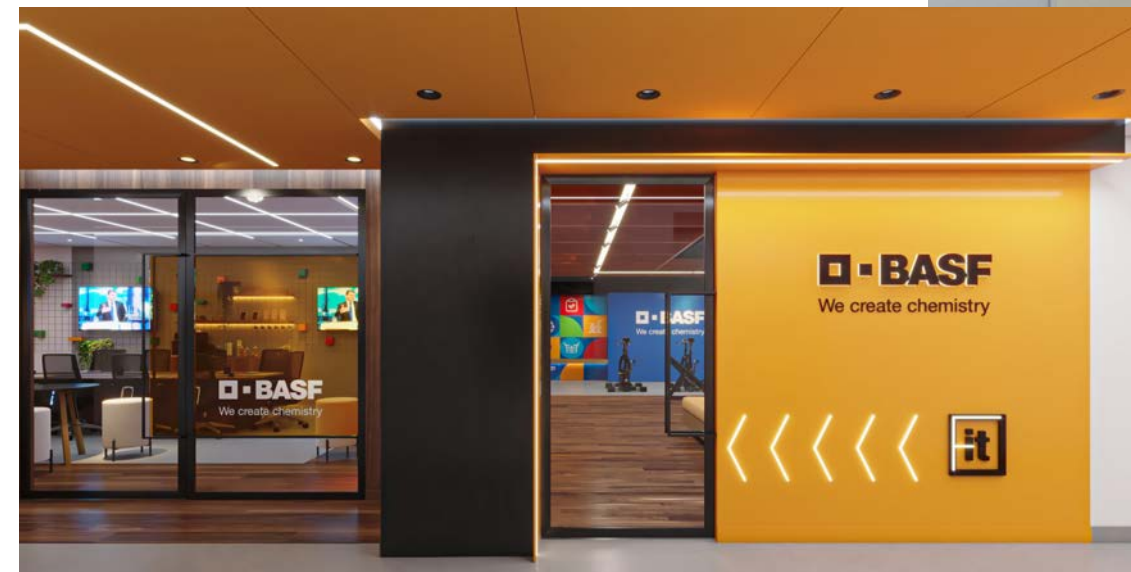
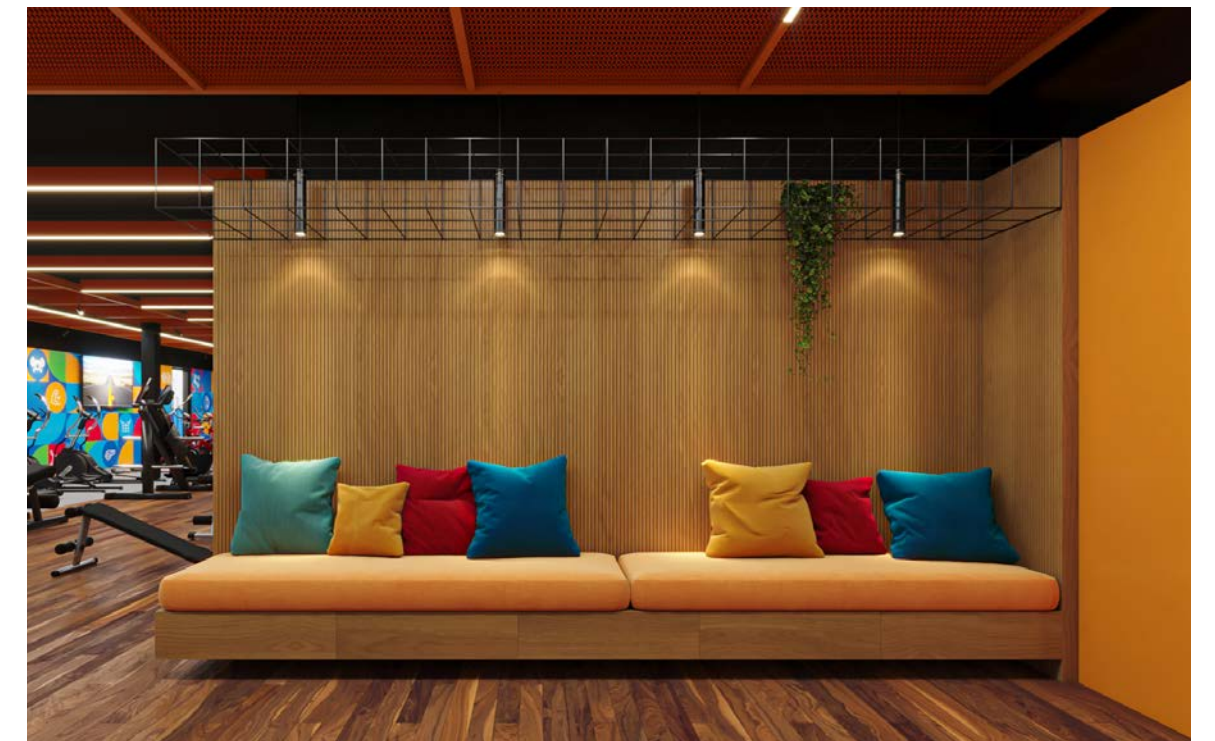
For the exterior, Silvia introduced directional lighting and incorporated on-brand, colorful flags into the landscape design. She extended these lively hues to an outdoor pergola, creating an inviting space for communal gatherings during the summer months.



COMMERCIAL INTERIOR BASF

Inside the building, Silvia designed wayfinding signs that harmonized with the brand's distinctive colors. While the company's vibrant palette permeated the interior through signage and furnishings, Silvia also balanced the design by incorporating natural wood elements and selecting serene flooring finishes, creating a well-rounded and welcoming atmosphere.







Z STREET LOFT

In this project, we collaborated on selecting both interior and exterior building materials, finishes, and color schemes. Our work also included designing carpentry, lighting, and the entire landscaping plan. We carefully selected the font type, size, and placement for the logo on the facade. From the initial stages to the final delivery, we were involved every step of the way. To help potential renters visualize the space, we furnished a model apartment, showcasing the best layout and design options.

BOULDER RIDGE CAMAS WASHINGTON

The layout and planning of interior spaces, along with the selection of exterior finishes, were meticulously crafted for this luxurious development, boasting breathtaking views. Silvia curated a range of interior design finish packages, available for selection by prospective homebuyers at the development's sales office. She skillfully maintained the contemporary aesthetics of the architecture by incorporating stone and black marble finishes while introducing wooden accents to infuse warmth into the living spaces.



COMMERCIAL BUILDING PORTLAND OREGON

The client sought a modern and streamlined aesthetic to revitalize this building. Silvia was entrusted with the task of modernizing the common areas, which encompassed the building's entrance, elevators, bathrooms, and communal kitchen. For individual office rentals, the spaces were deliberately left as blank canvases, allowing each tenant the opportunity to collaborate with Silvia for personalized interior design consultations.



MARILIA
NEGRÃO

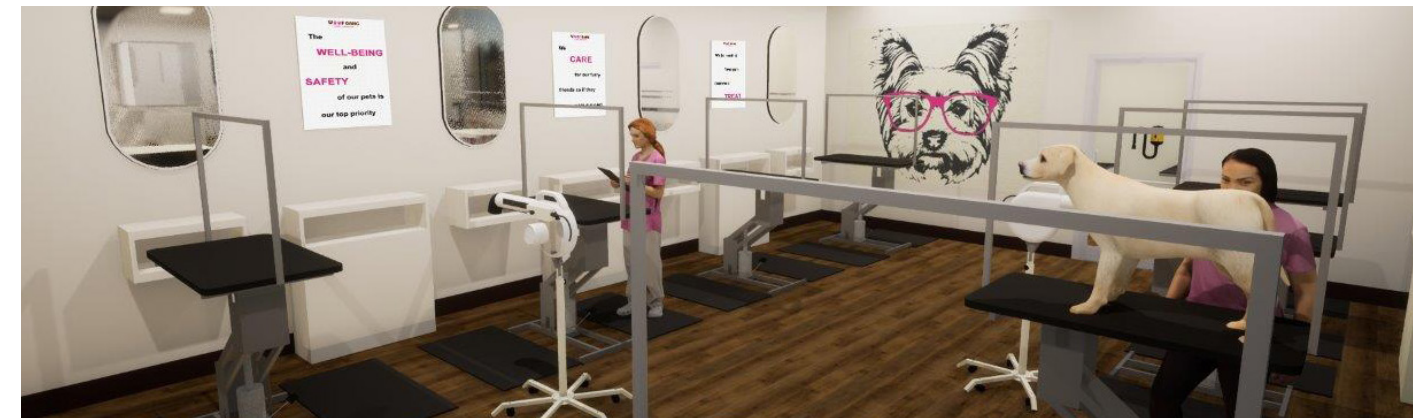
"I had such a great experience working with Silvia on my new house! She was incredibly practical and talented, and her eye for design was spot on. Not only did she help with space planning, but she also provided fantastic furniture suggestions that perfectly complemented each area. If you're looking for someone with a special touch, I highly recommend Silvia."



SPA BRAZILIAN BEAUTY

Silvia established a strong connection with this client who shared her Brazilian heritage and had a vision of bringing a luxurious spa to life. The client's dream was to create an oasis of beauty and glamor. To fulfill this vision, Silvia thoughtfully designed the spa experience with an emphasis on both beauty and opulence.

She integrated lush greenery to seamlessly blend the outdoors with the interior, creating an immersive natural ambiance. She added a dazzling chandelier that provided a touch of glamorous sparkle to the space. Finally she incorporated high-end finishes to elevate the overall sense of luxury within the spa.



WOOF GANG

The goal of every business is to create a welcoming and comfortable atmosphere for customers. This was achieved through careful planning of the Woof Gang color palette, meticulous attention to detail, and the incorporation of a variety of textures in the design.

This commercial design project was unique because Woof Gang is a franchise business. Collaborating with the owners, we were able to highlight their individuality while adhering to the franchise's design requirements.



CHAZZANO COFFEE ROASTERS

The client, who had already established one location, sought a distinctive and industrial design concept for their second location. This client's brand was centered around the color red, symbolizing the coffee cherry. To harmonize the bold red theme, Silvia recommended incorporating green to represent the entirety of the coffee plant.

The design narrative unfolded through various elements: a brick backsplash, a metal countertop, meticulously crafted handmade green tiles, and coffee plant-themed wallpaper in the bathroom. Collectively, these design elements told the captivating story of coffee's journey from the farm to the cup.



DEBORAH FERREIRA

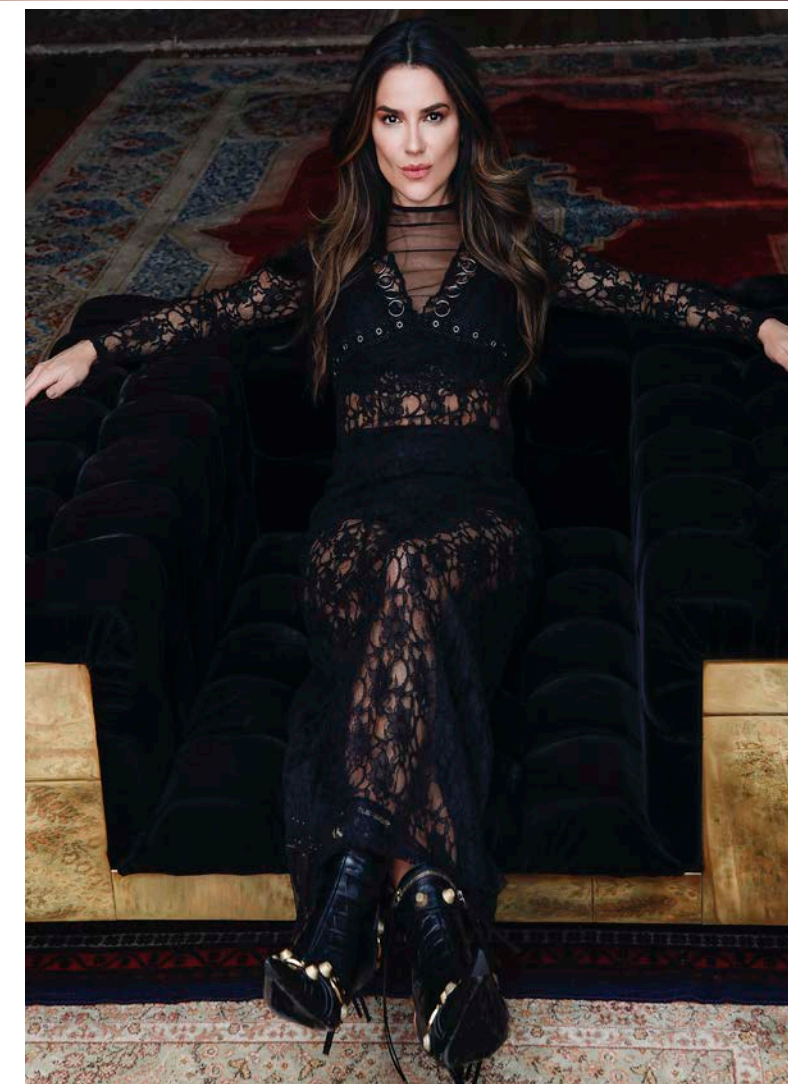
"This is the third time we have worked with Silvia, she is a very good professional and has a sophisticated taste. Silvia is always available and concerned about our needs and preferences. During the whole process she gave us good advice and insights about what does and doesn't work. I'm impressed with her design abilities and happy with the final result."



BAR & LOUNGE

An old Bar & Lounge in the center of Detroit has been revitalized by Silvia's contemporary design project. She masterfully integrated the bar area with the dancing and dinner spaces, creating a seamless flow throughout the venue. The ceiling lights provide a rooftop effect in the dance area.

Silvia's innovative approach has transformed the once dim and outdated space into a vibrant and modern venue that attracts a diverse crowd. Sleek furniture, elegant finishes, and state-of-the-art lighting blend the old with the new, creating a unique atmosphere.



BAUS BIRMINGHAM

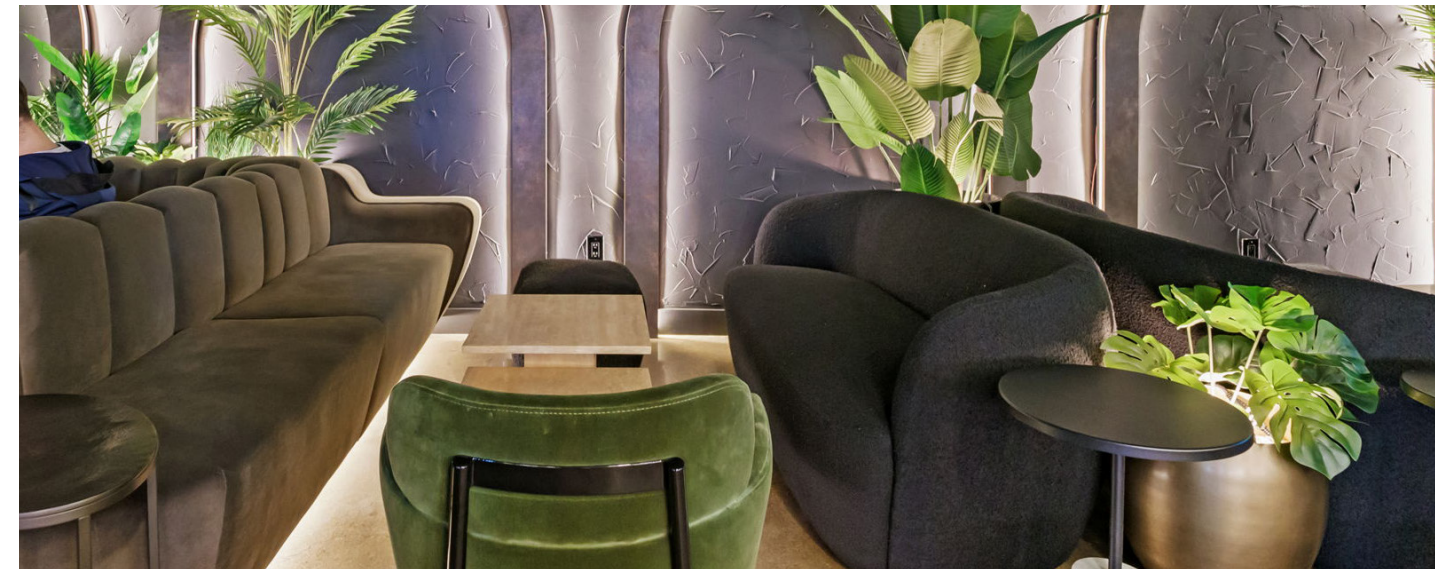
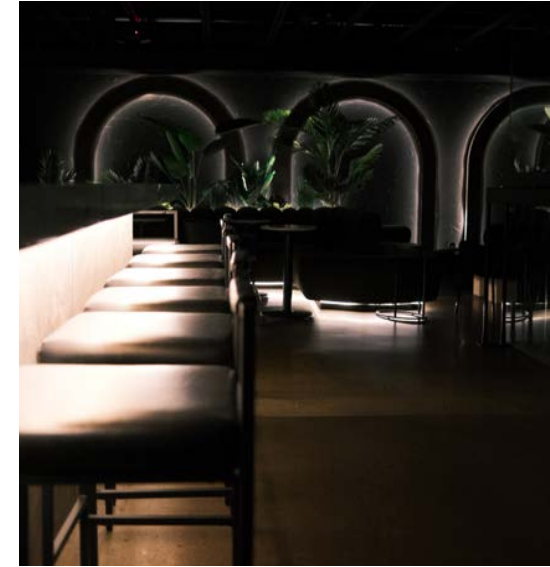
Same client, two different locations.

In their Birmingham location, we were tasked with refreshing the facade to match their sleek interiors. Inspired by contemporary design trends, we integrated metal elements, clean lines, and vibrant green accents to achieve a modern look.



BAUS ROCHESTER

At their Rochester location, we addressed critical elements such as damaged furniture, a bar that couldn't accommodate all the bottles, and a worn staircase. To refresh the overall ambiance and align with the client's vision, we renovated the staircase with stone and lighting to elevate the space. The bar area received a makeover with a Corten finish for durability and a contemporary touch. Modern open shelves were integrated into the bar area, and arches were added to the walls to create a dynamic pattern with movement and lighting. We also introduced a long customized sofa and smaller furniture pieces to better suit the space.



DELI DESIGN

This client already owned a quaint Delicatessen and sought to open a second one, this time transforming it into a bustling Italian eatery.

The project demanded a thorough understanding of the service flow, from the Kitchen to customer service, with a specific challenge to maximize storage and display.

We embraced the building's rustic charm by replicating exposed brick walls and introducing wooden floors, creating a cozy ambiance. Italian tiles adorned the beamed facade, while strategically placed shelves provided ample storage and display space. A dark green backsplash added vibrancy, complementing the abundant use of wood in the design. A unique wine cellar crafted from wooden crates served as a captivating focal point for specialty items. A suspended wooden ceiling grid was also installed to lower the high ceiling, enhancing the cozy atmosphere.

Outside, we adorned the space with whimsical elements, including a pig sculpture, window flowers, and inviting tables, creating a charming ambiance that entices passersby.





BEAUTY STUDIO

The client wanted to bring more life into the studio to make customers warm and cozy.

Modern lines and custom details were added to make a more impressive rebrand. Now when clients arrive in the space the quality and high-end feel stands out. The physical location needed to match the new, evolved brand.

Having extensive experience with residential jobs (single family homes, condos, apartments, vacation homes), Silvia's innovative design consistently impresses her clients.

In this project we followed the original modern design by mixing materials remodeling of existing homes; New construction support; Layout and Floor plan; Furniture rearrangement/replacement; Color palette and finishing selection; Wall textures and materials; Kitchen design; Bathroom design; Lighting; and Landscaping.



HILLS HOUSE

RESIDENTIAL design

MODERN MIXING

For this renovation I followed the house's modern style mixing materials.

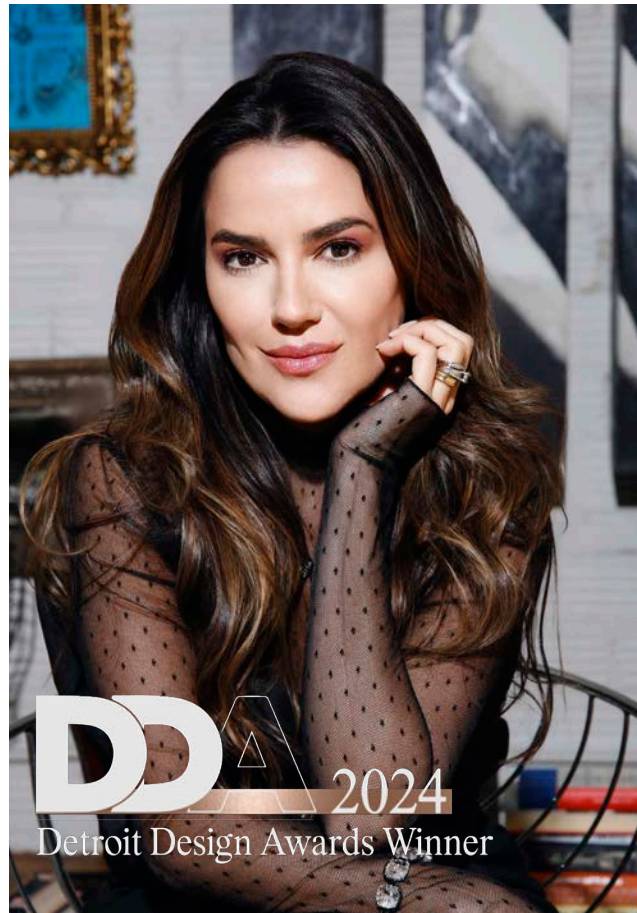


DESROSIERS HOUSE

Updating this architectural masterpiece of a home was a special gift. The goal was to refresh the interior design while still highlighting the original architectural features.

The kitchen was remodeled to incorporate updated modern elements that worked with the rich details already present. Adding wood created a feeling of warmth without taking away from the openness and clean lines of the design. Brazilian furniture was a delightful addition to the design throughout the home.

Every aspect of the design was strategically planned from the ceiling to the floor to elevate this already amazing home into a timeless work of art.





PARK HILL HOUSE

These clients cherished the location of their home but recognized that its interior and exterior finishes were beginning to show signs of aging. For the exterior Silvia devised a new landscape design, introduced fresh siding and windows, and created an outdoor kitchen to cater to the clients' passion for grilling. They also had an unfinished basement with a breathtaking view that they wanted to capitalize on for an entertainment space.

To align with the clients' vision of a modern European aesthetic that could also serve as a showcase for their extensive art collection, Silvia employed a design palette featuring light colors, tasteful wood accents, and the inclusion of high-end furniture. The result was a seamless blend of elegance and functionality.





TRAVERSE CITY HOUSE

This Lake house was made for spending time with family and friends and is strategically positioned to take full advantage of its breathtaking natural surroundings. Silvia skillfully integrated these scenic elements into the interior design by optimizing window placements, introducing lush greenery, and incorporating natural stone and wood finishes throughout the living spaces. The design philosophy prioritizes open interior sightlines, achieving a harmonious blend of sleek, modern aesthetics with warm and inviting finishes.





EVOLUTION WITH SIMPLICITY AND MODERNITY

LAKE VIEW HOUSE

Presenting elegance at its best with a modern home interior. This design should point out that less is truly more if you know how to organize your space. Simple but beautiful art pieces, a lot of natural sunlight as well as natural elements throughout the object and minimal decor elements come together to create this amazing yet simple design.



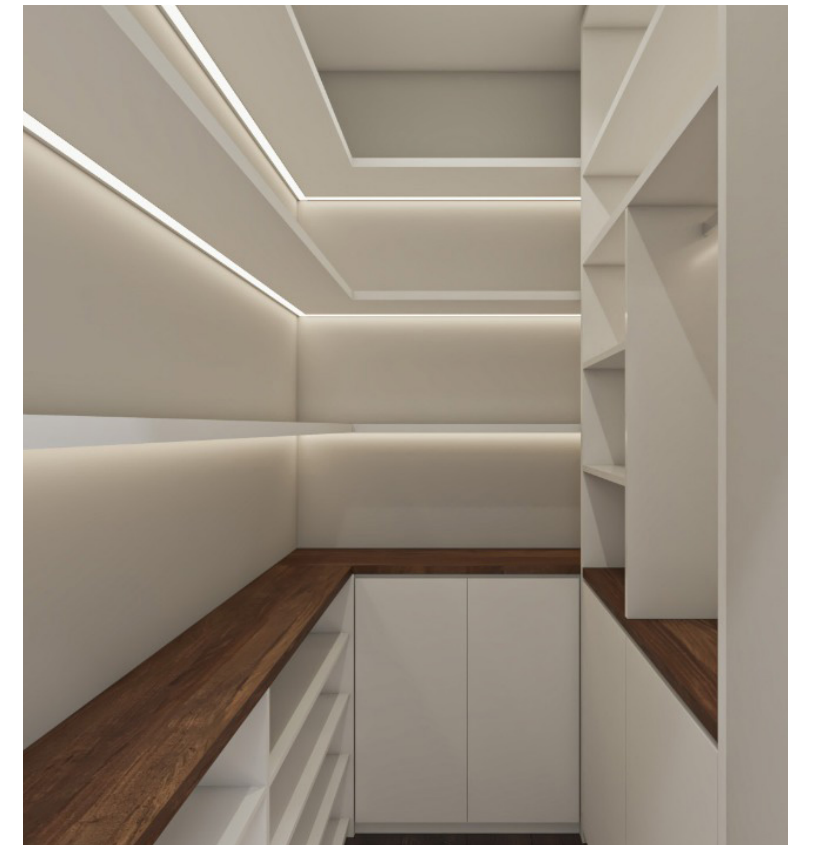
► **FORM AND FUNCTION**

The main floor of this house continues to give a warm yet modern aesthetic in the kitchen where functionality is just as important as design.



► **BRIGHT PANTRY**

Our objective was to create a bright pantry with plenty of open space designed for optimal functionality and style. The all-white interiors are illuminated by integrated LED lighting, and large shelves provide ample room to store food and beverages. Closed lower cabinets offer additional storage for items that need to be out of sight.



ENTERTAINING WITH A VIEW

Even the basement in this house has stunning views of the lake and Silvia's design capitalize on this feature.



DANIELLA DJEKOVIC

"I really could go on and on about how amazing Silvia and her team are! We've used her for multiple projects and can't recommend her enough. She's extremely talented and makes any space come to life."





ATLANTA HOUSE

This project posed a unique challenge due to strict Homeowner's Association (HOA) regulations regarding the installation of an above-ground swimming spa. We devised a deck that seamlessly integrated with the landscape design to ensure approval, meeting the HOA's stringent criteria.

We maximized the deck's functionality by incorporating large steps that double as seating areas, providing versatile spaces for relaxation and socializing.

We expanded the concrete patio and created a spacious seating and dining area, planting fruit-bearing trees throughout the backyard. We also maximized the outdoor experience with a solar-heated shower and installed concrete steps to transition between the dining/seating area and the swimming spa.

To illuminate the backyard and create a captivating ambiance, we meticulously installed over 35 lighting spots, ensuring that the space comes alive as dusk falls.

DEER SPRINGS HOUSE

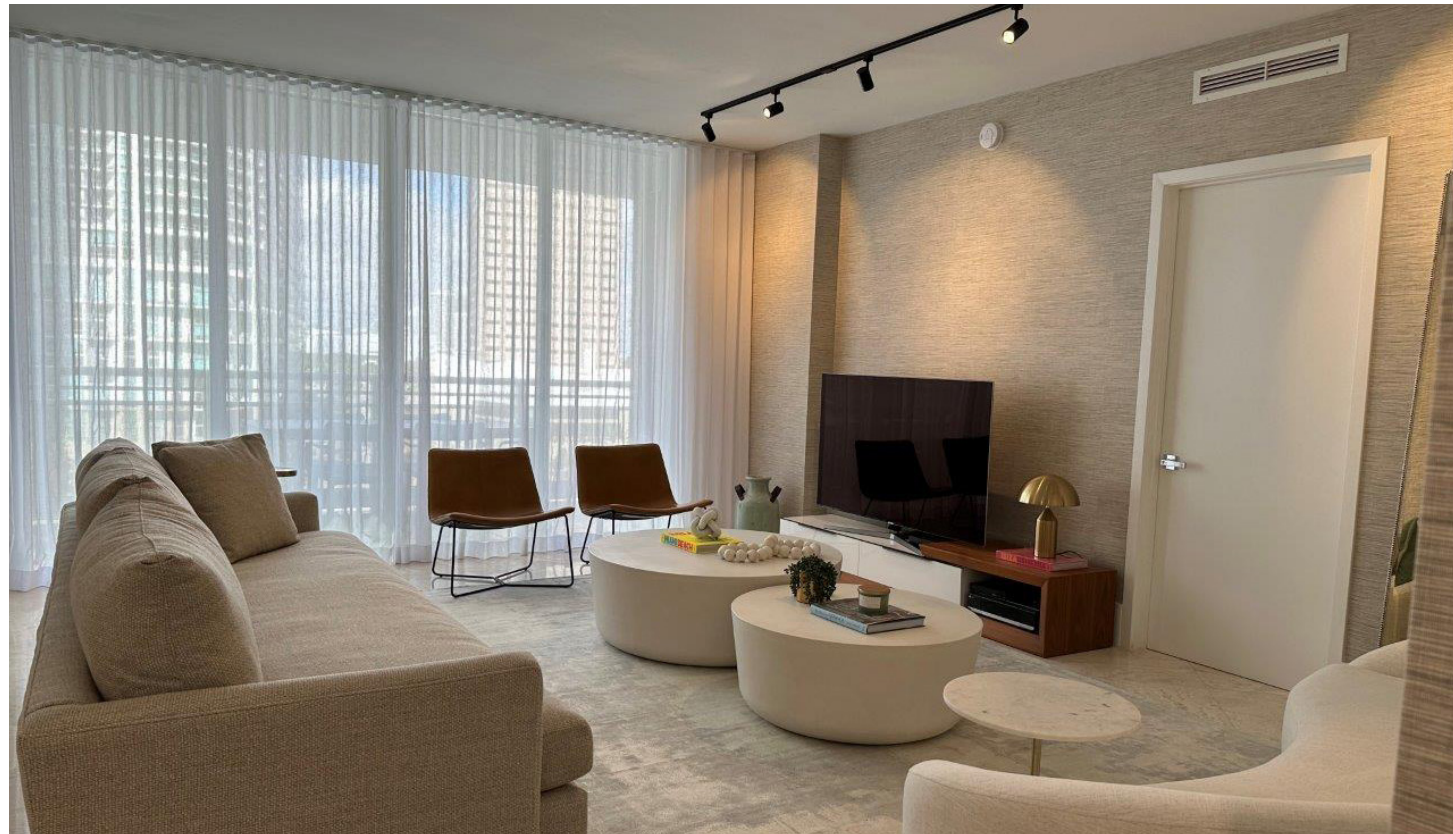
These clients are avid entertainers and envisioned a complete transformation of their first floor. Silvia orchestrated a comprehensive remodel that entailed reimagining the layout. She introduced a spacious island and upgraded appliances in the kitchen, expanded the pantry, integrated a wine wall into the dining area and installed new furniture. Maintaining an ambiance of openness, she opted for a design characterized by brightness and modern lines.



CARBONEL CONDO

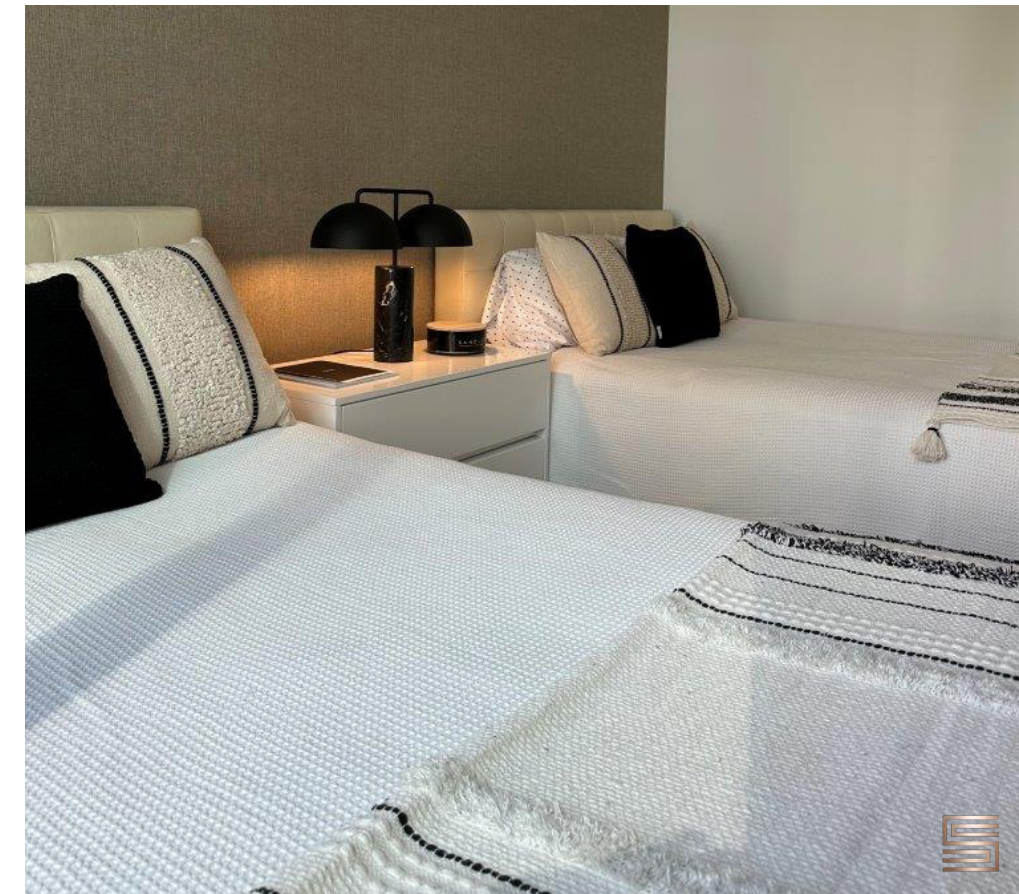
Our clients sought to modernize their vacation condo which is situated within a 20-year-old building in Miami. Silvia took on a dual role as both the designer and general project manager since the clients reside in Brazil and required assistance with material sourcing and contractor coordination. While retaining the existing floor finishes, she embarked on a comprehensive renovation, updating the baseboards, lighting, outlet covers, doors, and hardware to breathe new life into the space.

Given that this condo serves as a vacation retreat, every room was meticulously optimized for capacity and short-term living. The clients' vision centered around a contemporary aesthetic, characterized by lighter colors and clean lines, reflecting their desire for a fresh and inviting atmosphere.



▶ THREADS OF DESIGN

Incorporating a variety of textures with neutral soft tones and in moments of stark contrast with black presents interest for the eye while keeping a sense of calm.

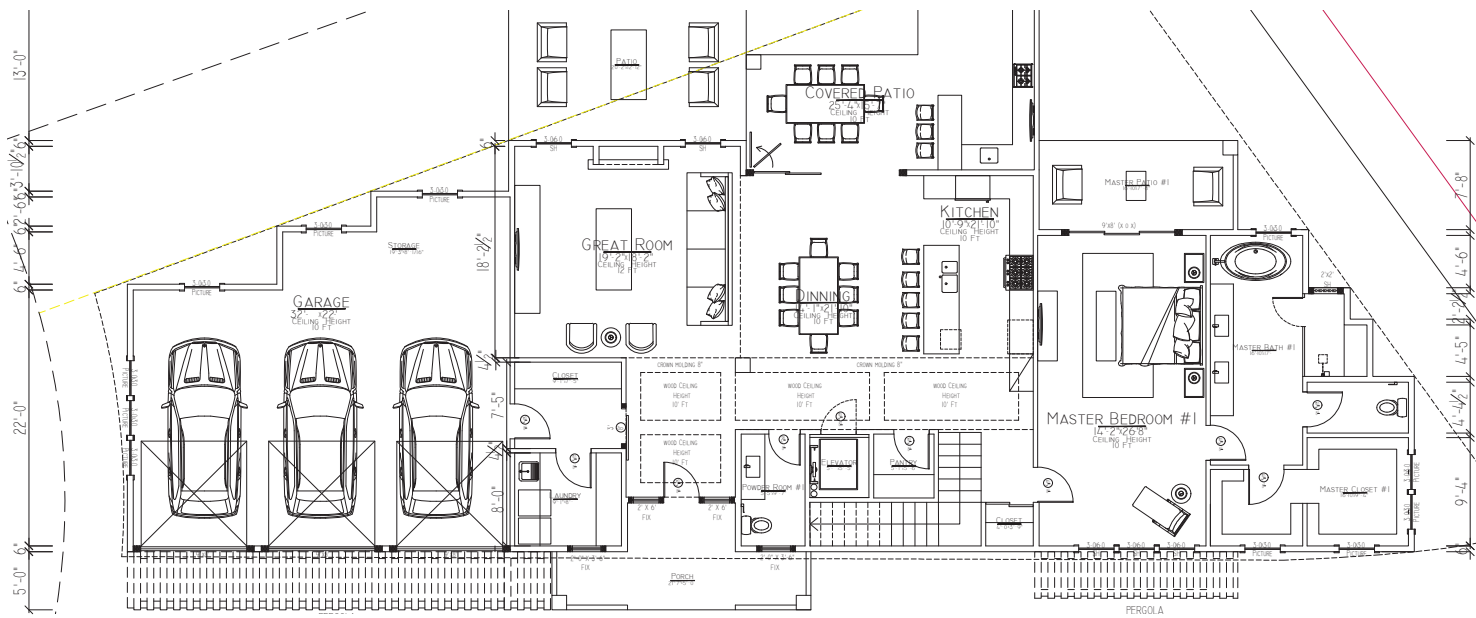


"A truly amazing design team to work with!"



2 CREEKS DESIGN

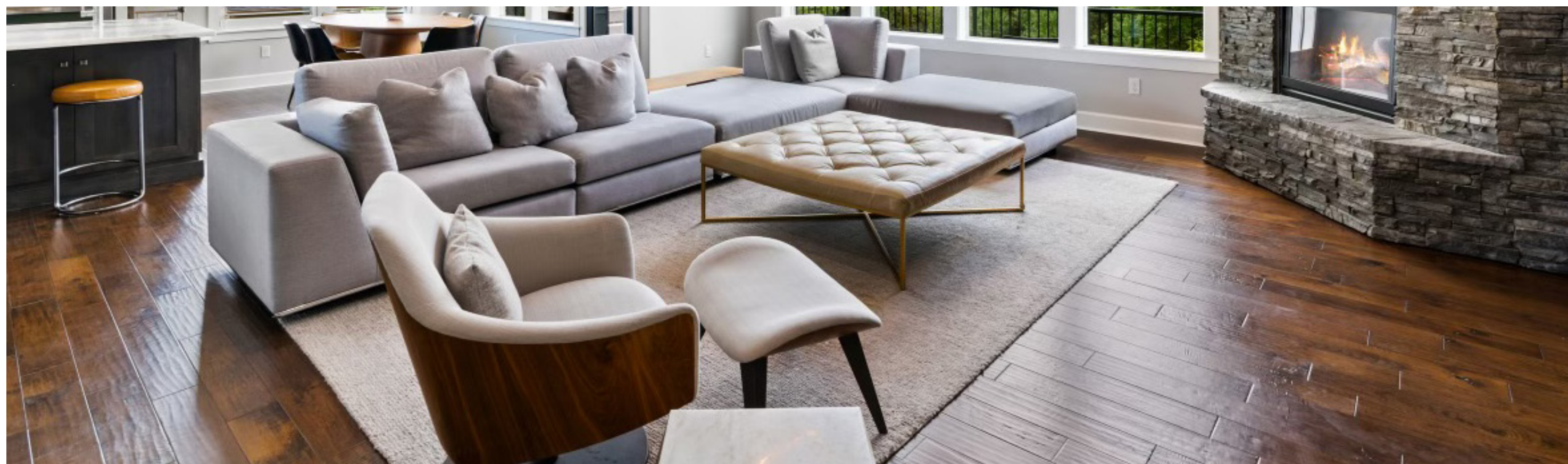
This exclusive 4,000+ sq. ft. custom designed home was tailored to follow the existing residential development style while also incorporating the client's specific needs. It sits on a lot with a unique personality with a traditional design approach layout.





PHOTOGRAPHER'S DESIGN

New construction house for a modern family with three children. The furniture was replaced with modern lines and clean design to receive family and friends.



BOULEVARD HOUSE

The clients required a whole new design of their kitchen. Besides being dated and not having enough light, the biggest challenge was to create a better circulation flow without compromising the powder room. The result was a well-planned and very efficient kitchen with a modern and inviting feel.



TREE HOUSE

The geometric play with lighting, house elements and varied surfaces is excellent. The minimal color palette makes for a very clean and elegant design.





BIRMINGHAM DESIGN

For a cool and modern family, this new apartment needed a new layout design and new furniture to make the atmosphere perfect.

We chose a muted color palette with pops of color and incorporated diverse finishes throughout the space.



KIDS PLAYROOM

Two adorable little girls knew what they liked for this space. With a modern and clean design, this playroom turned out to be their preferred spot in the house.

We ensured ample storage, accessible shelves, and hidden doors to keep any clutter neatly out of sight.





WHITE HOUSE

A contemporary mid-century home from the late 60's that has been completely remodeled following modern lines, clean design and open spaces to receive family and friends.

Step inside the 3,176-square-foot home and you'll find a designer's dream with features inspired by mid-century modern architecture. The space is wide open—with the dining room just a single step up—and bay windows looking out to the front yard that admit ample natural light. The glass railing leading upstairs is another way to signal that little is concealed on the main floor.



TROY DESIGN

BOY'S ROOM

A modern boy's room with distinct spaces to sleep, play, read, and study. The bay window was the perfect spot for a functional storage bench while still being a fun, cool spot to read a book or play with toys.



▲ A ROOM TO GROW

The built in shelves next to the large desk allow for displaying trophies and special toys.



GIRLS'S ROOM

A room fit for a princess-sized imagination. Parents and kids can both have it all when you combine creativity, functionality, and timeless modern lines.



▲ DREAM COME TRUE

Every inch is designed to inspire a childhood bedroom full of happy memories.





MASTER BEDROOM

Everyone in the Troy family has sweet dreams with their new bedrooms. For the master bedroom, a simple, elegant, and dark palette create a sophisticated mood. Every line is designed to flow together with elements that match other rooms in the house. The vanity and mirror add modern, fun highlights.



ELISA LI

"Silvia helped us turn our vision into reality!! We worked with Silvia to design our newly constructed 2-story house. She is very professional, thoughtful, and approachable. Her design is the perfect combination of style, quality, budget and functionality."



TROY DESIGN

Basements can be a wonderful way to express your style while adding multi-functional spaces for the whole family. No detail was overlooked. For instance, the tread lights help keep the ceiling high. The playroom has sliding barn doors allowing the adults to still be able to see the kids while not having to be in the same space. Nature is a design element that brings life and comfort into a space, perfect for a basement. Modern lines and unique details create a distinct personality in each room while keeping a cohesive feel to the entire basement. This is a space where everyone in the family wants to be.

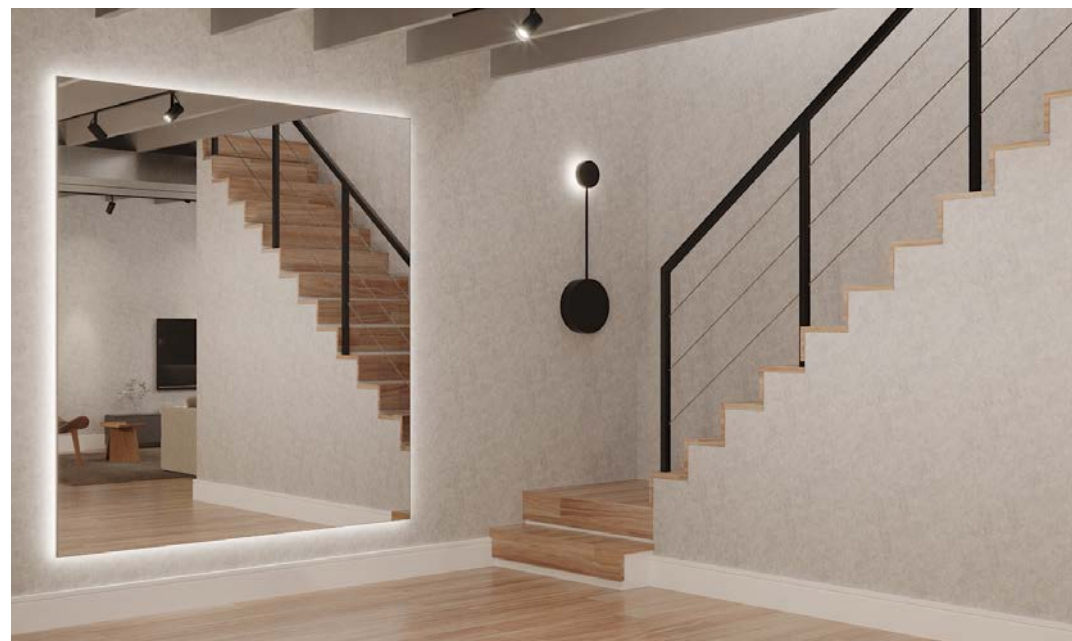


▲ LUSH RETREAT

A beautiful green wall was added to the bathroom, bringing a fresh and natural ambiance to the space.

▼ EVERY STEP

The design begins with the very first step down the open staircase.



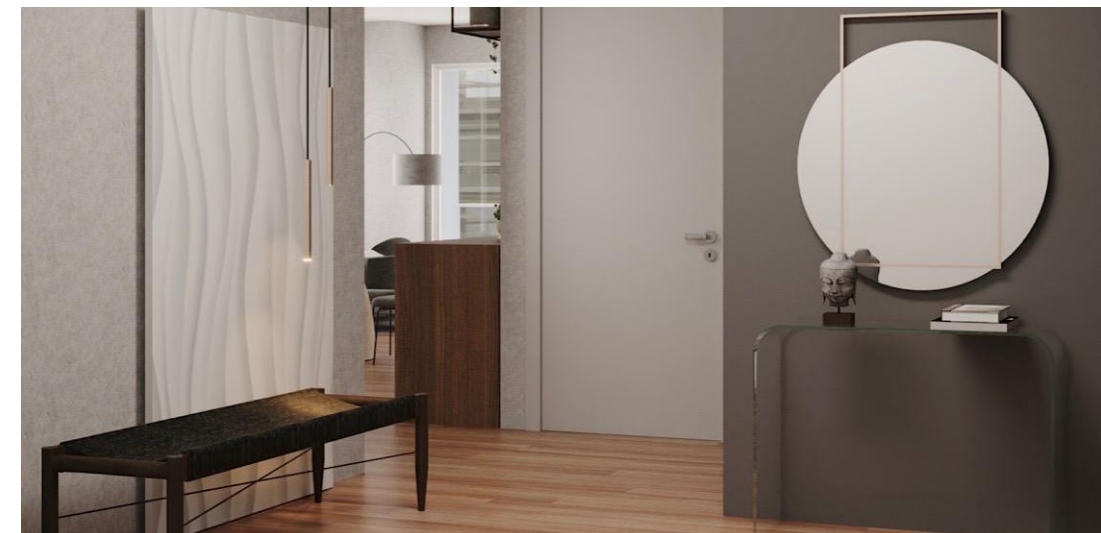


PORTLAND CONDO

The modern space features a view of the city of Portland, OR. A clean style with a mix of materials and textures fit the clients' desire to help keep the space feeling warm and inviting. The plants add life to the concrete and wood tones.



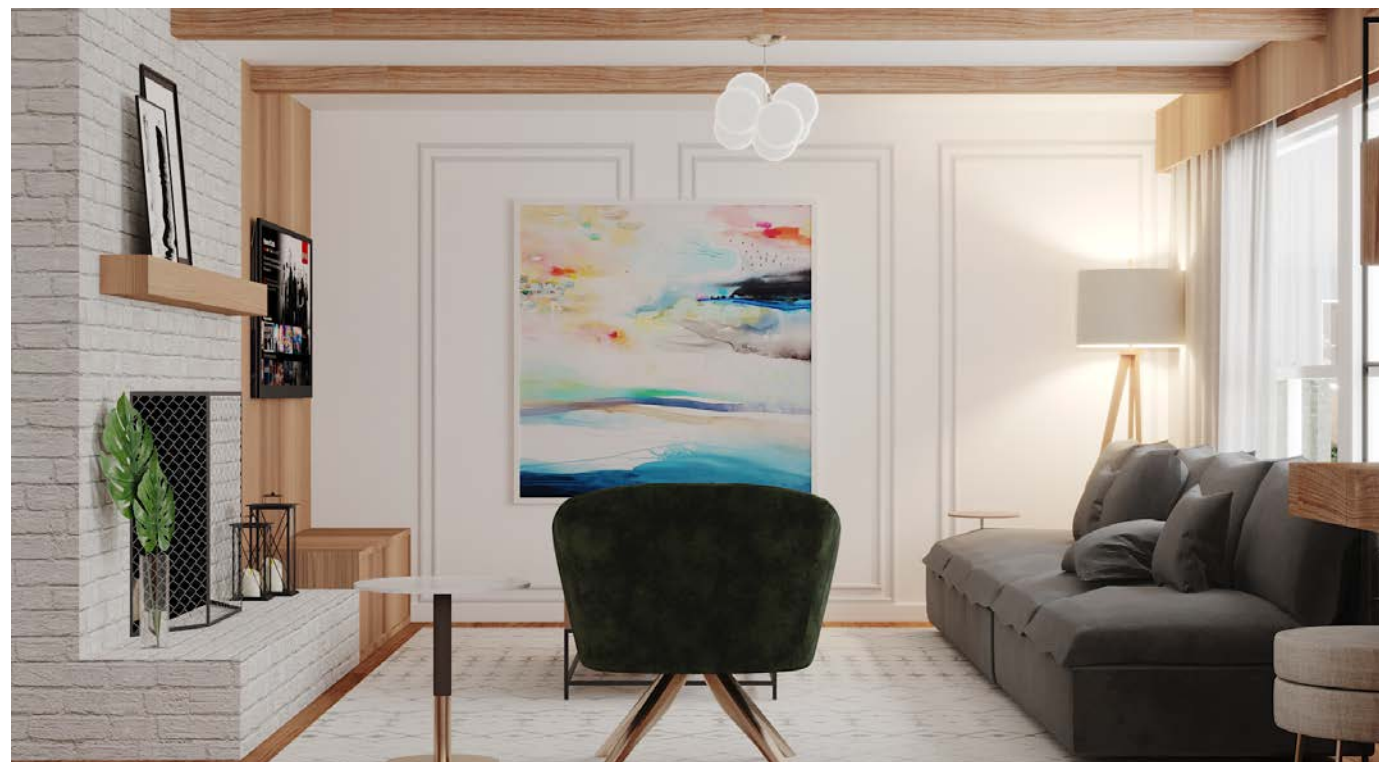
► WELCOME HOME
Every space in a home is an opportunity to showcase your style.





CAMAS DESIGN

A mix of clean lines and pops of color mix to create a home full of personality and fun. The use of wood materials adds a feeling of farm to table while the metal keeps the design modern. The wood beams offered a way to separate rooms without lowering the ceilings.



▲ COLOR

A muted color palette allows the purple doors to stand out without overwhelming the other elements of design.



CHASE DESIGN

In this basement design project, our client presented us with a unique challenge: to create a space that would accommodate large gatherings of friends and family. With a wishlist including a fully functional kitchen, a wine cellar, a gaming area, a spacious dining table, and ample seating options, our task was clear.

Embracing the opportunity for creative freedom, we set out to design an environment that maximizes every inch of the basement, ensuring both functionality and warmth.





We Incorporated natural wood tones to infuse the space with light, we created a stone wall to serve as a focal point and integrated a glass wine cellar, adding personality and style.



SPRINGS DESIGN

In this home extension project with integrated landscaping and hardscaping, our task was to craft a space infused with Brazilian charm, drawing inspiration from its authentic architecture and vibrant décor while ensuring year-round functionality.

We created open spaces flooded with natural light, incorporated elements such as stones and modern lines, and seamlessly connected various features, including a pool, soccer field, gazebo, and jacuzzi. We integrated areas for games, a dedicated reading space for kids, and a cozy dining area.

The result? A harmonious blend of nature and modernity, where the natural feel of concrete flooring and wood ceilings evokes a sense of tranquility.





FLORIDA DESIGN

In this out-of-state renovation project, our principal challenge was rearranging the entire Kitchen, which suffered from a cramped layout with awkward angles and positioning.

To tackle these challenges head-on, we demolished a wall to expand the space, seamlessly integrating it with the rest of the house while establishing a focal point for the Kitchen. Next, we repositioned key elements such as the kitchen sink, hood, and appliances to optimize functionality and flow.

We opted for concrete porcelain tile flooring for its durability and the modern aesthetic it brings to the space. Light wood tones were introduced to the kitchen cabinets, infusing warmth and inviting charm into the environment. Finally, we incorporated slat wall panels and LED lighting to enhance visual interest, contributing to a contemporary and dynamic atmosphere.

The same approach was taken with the bathroom, aiming to make it modern, inviting, and functional.



SHENANDOAH DESIGN

The bones of this house were already in good shape, allowing us to focus on furnishing and making a few key updates. We added a new kitchen island, designed a custom office built-in, and installed a new pendant light over the nook area. In the living room, we created two lounge areas with wood paneling and curtains to enhance comfort and coziness. We also added wallpaper and ensured the TV room had a designated area for the kids to play. In the garage, we installed a large mudroom area.



MONDRIAN DESIGN

In this project, we worked on one of the first completed homes in the Mondrian neighborhood. Once our design was shared on social media, multiple homeowners from the area reached out for design assistance for their own homes.

Although the home was brand new when purchased, we recognized the need for a few changes to ensure the design flowed seamlessly and reflected the owner's personality. Considering the client's frequent moves and uncertain residency duration, we focused on creating a space that was enjoyable while also being able to recoup remodeling costs and furniture investments for potential future homes.

We made significant changes to the Kitchen, including switching the countertops and backsplash from black to lighter, brighter quartz and extending the island to fit the room's dimensions better, aligning it with the cabinets. All lighting fixtures were adjusted to complement the new kitchen design, and wood panels were added to the eating area to complement the contemporary stone.



MONDRIAN DESIGN

The living room, boasting impressive 20-foot ceilings, was adorned with curtains to enhance warmth and coziness. We carefully selected furniture of the correct proportions, along with an ample pendant light and a substantial rug, ensuring a cohesive design from top to bottom.

Every room was meticulously designed with modern style, warmth, and design fundamentals in mind. Special attention was given to more minor details, such as incorporating gold accents, a beautiful monochromatic paint color palette, and updating mirrors and lighting fixtures.

In addition to indoor design, we also took charge of landscaping, maintaining a clean and minimalist style. The entryway steps' unique design and backyard patio, complete with a fireplace and barbecue, create an inviting space for entertaining and making lasting memories.





JARDINS DESIGN

This client sought a renovation in the prime location of Sao Paulo, Brazil. The primary challenge was transforming a 645 sqft condo into a multifunctional headquarters suitable for meetings, comfortable living, and modern aesthetics.

To tackle this challenge, we utilized a strategic combination of wood and mirrors to create an illusion of spaciousness within the limited area. Carefully integrating curved sofas and asymmetrical designs enhanced coziness without compromising style, resulting in a successful fusion of home and office ambiance tailored to the client's frequent travel lifestyle. Our focus on maximizing storage throughout the house ensures that personal items can be neatly stowed away, maintaining both functionality and aesthetic appeal.



BELLA COLINA DESIGN

This project, in collaboration with interior designer Claudia Dreza, involved the creation of four spec homes. While the architectural design was already established, we were responsible for selecting and implementing all the finishes and colors throughout the houses.

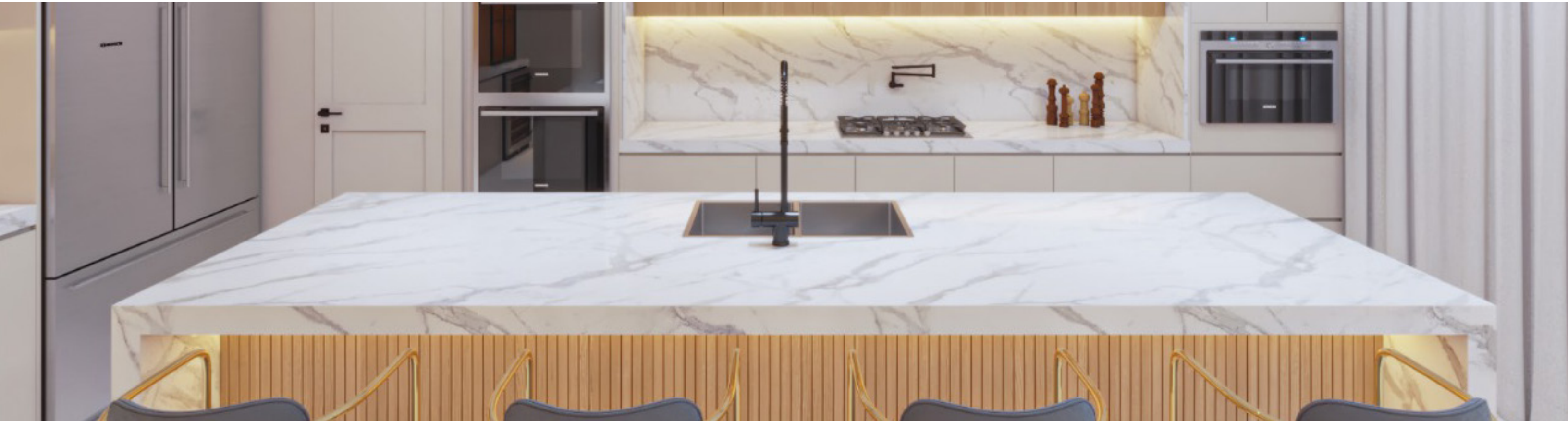
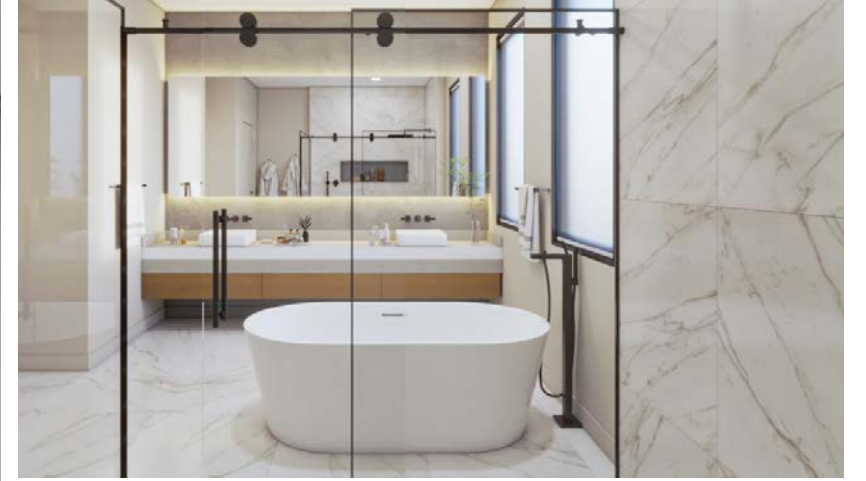
In this high-end condominium in Florida, styled to echo an Italian villa, we aimed for a modern look with a Brazilian twist. Our objective was to craft a contemporary aesthetic suited to attract Brazilian buyers.



BELLA COLINA DESIGN

The four homes were outfitted with premium materials and finishes, meticulously chosen to meet the project's standards.

Each home was uniquely crafted to exude sophistication and charm, featuring oversized porcelain tiles, refined wood flooring, a variety of hardware styles, assorted stones, mirrors, glass, and LED lighting.



BELLA COLINA DESIGN

You'll discover custom carpentry throughout the houses, where attention is paid to practicality, aesthetics, and functionality.

In the kitchen, twin waterfall white marble islands steal the spotlight, offering ample working space for chopping, cooking, and prepping, complete with a cooktop. Floor-to-ceiling cabinets and wall ovens ensure maximum storage and convenience. A dining-height counter table was seamlessly integrated into one of the islands.

The kitchen is beautifully illuminated by a set of four rounded glass light fixtures, adding a touch of elegance. At the same time, a showstopper chandelier hangs over the second island, creating a stunning focal point.

To elevate the aesthetic and ensure a modern design, slate wall panels were incorporated, adding both texture and visual intrigue to the space.





BELLA COLINA DESIGN

The spaces were carefully crafted with distinctive features and contemporary elements to captivate potential buyers, exuding personality and charm.

In the bathroom, a standalone bathtub paired with light wood tones and an exquisite long marble counter elevate the space to a luxurious retreat. Meanwhile, we embraced a minimalist approach in the bedroom with wood paneling featuring integrated storage and a sleek, low-profile bed frame, enriching functionality and style.



BELLA COLINA DESIGN

The finishes were exclusively sourced from Portobello, a key partner of the investor group, ensuring high-quality materials throughout.

Glass railings were incorporated to introduce transparency and versatility, making a bold statement in line with the modern aesthetics of these spec homes.





PHONE

+1 248 579 4157

SOCIAL



WEBSITE

SILVIASCHAEFFERDESIGN.COM

EMAIL

INFO@SILVIASCHAEFFERDESIGN.COM